

MULTICYCLONE PUMP STAND

Installation and Operation Manual



OFFICES - AUSTRALIA

NSW - Sydney
(HEAD OFFICE)
Tel : +61 2 9898 8686
VIC/ TAS - Melbourne
Tel : +61 3 9764 1211
WA - Perth
Tel : +61 8 9273 1900
QLD - Brisbane
Tel : +61 7 3299 9900
SA/ NT - Adelaide
Tel : +61 8 8244 6000
ACT Distributor
Tel : +61 2 6280 6476

OFFICES - OVERSEAS

Waterco USA
Augusta, USA
Tel : +1 706 793 7291
Waterco Canada
St-Hyacinthe, QC, Canada
Tel : +1 450 796 1421
Waterco (Europe) Limited
Sittingbourne, Kent. UK
Tel : +44(0) 1795 521 733
Waterco France
SAINT PRIEST, France
Tel : +33 (0)4 72 79 33 30
Waterco (NZ) Limited
Auckland, New Zealand
Tel : +64 9 525 7570

Waterco (C) Limited
Guangzhou, China
Tel : +8620 3222 2180
Waterco (Far East) Sdn. Bhd.
Selangor, Malaysia
Tel : +60 3 6145 6000
PT Waterco Indonesia
Jakarta, Indonesia
Tel : +62 21 4585 1481
Waterco International Pte Ltd
Singapore
Tel : +65 6344 2378

WARNING

This equipment must be installed and serviced by a qualified technician. Improper installation may result in property damage, serious injury or death. Improper installation and/or operation will void the warranty.



Notice to Installer

This manual contains important information about the installation, operation & safe use of this product. Once the product has been installed this manual must be given to the owner / operator of this equipment.

WATERCO

Waterco Limited ABN 62 002 070 733

Member
**WATER
QUALITY
ASSOCIATION**



WATERCO

water, the liquid of life

www.waterco.com

Table of Contents

| | |
|-------------------------------|----|
| SAFETY INFORMATION | 01 |
| MULTICYCLONE PUMP STAND | 01 |
| DIMENSIONS | 01 |
| INSTALLATION | 02 |
| RECOMMENDATIONS | 05 |
| WARRANTY | 05 |

SAFETY INFORMATION

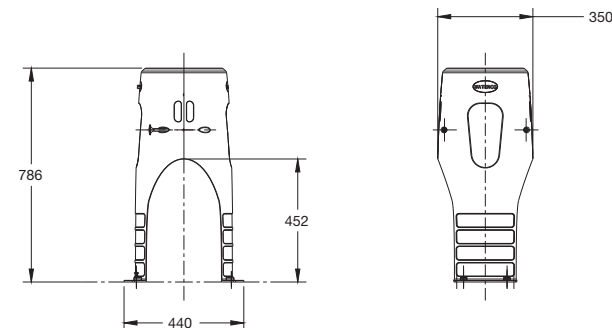
1. The installation should be carried out in accordance to local safety standards and bylaws.
2. Any modification of the MultiCyclone Pump Stand requires the prior consent from Waterco. Original replacement parts and accessories authorised by the manufacturer ensure a high level of safety. Waterco assumes no liability for the damage and injuries caused by unauthorised replacement parts and accessories.
3. The user should make sure that the installation is carried out by qualified authorised persons and that these persons have first carefully read the following instructions.
4. The operating safety of the filter is only guaranteed if the installation and operation Instructions are correctly followed.
5. In the event of defective operation or fault, contact Waterco or its nearest authorised service agent.
6. To reduce the risk of injury, do not permit children to use this product.
7. Incorrectly installed equipment may fail, causing severe injury or property damage.
8. Chemical spills and fumes can weaken Swimming Pool/Spa equipment. Corrosion can cause filters and other equipment to fail, resulting in severe injury or property damage. Do not store pool chemicals near your equipment.

MULTICYCLONE PUMP STAND

The Waterco MultiCyclone pump stand will provide installation support of all Waterco MultiCyclone models (12 & 16, 12 & 16 Plus, 12 & 16 Ultra) installed with any Waterco pool pump*. This being, the most hydraulic efficient installation for any Waterco MultiCyclone.

* Excluding Waterco Hydrostorm Plus, Hydrostar and all other Waterco commercial pumps.

DIMENSIONS



INSTALLATION

Installation (A), include Multicyclone 16, 16 Plus & 16 Ultra models.

Note: All MultiCyclone 16 models have an additional locking ring that enables the clear poly carbonate sediment chamber to be split; this locking ring is larger than the top opening of the MultiCyclone pump stand. To install a MultiCyclone 16 model onto the pump stand, the pump stand halves will need to be separated and rejoined as follows:

1. Remove the MultiCyclone pump stand from the protective packaging carton, and note that the pump stand is assembled ready for use.
2. Separate the two halves of the pump stand. The MultiCyclone pump stand is held together with two quarter turn release keys.
3. Hold the large knob of the two quarter turn release keys and press and turn one quarter either clockwise or anti clockwise releasing the quarter turn release key. The MultiCyclone pump stand has two quarter turn release keys and both will need to be removed to separate the pump stand two halves.



Note: The two halves of the MultiCyclone pump stand are purposely manufactured with a close interference fit tolerance and may require a flat blade screw driver or similar tool to help separate the two MultiCyclone pump stand halves.

4. Insert the flat section of the screw driver between the two halves joint and slowly turn the blade left and right in order to separate the two halves of the MultiCyclone pump stand.



5. The MultiCyclone pump stand can be fully separated, but ensure both sides are opened evenly.



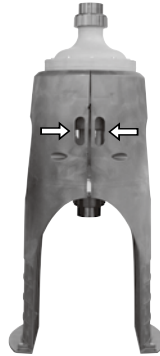
6. Once the two halves of the MultiCyclone pump stand are separated. Place the MultiCyclone 16 model into the top opening so the top flange of the MultiCyclone being supported **by** one half of the MultiCyclone pump stand.



Note: Ensure the twelve retaining screws on the MultiCyclone flange are correctly align with the MultiCyclone pump stand opening locating slots, and the MultiCyclone clear poly carbonate sediment drain port is properly aligned with one of the MultiCyclone pump stand plumbing exit holes. Refer Image.



- With the MultiCyclone 16 model properly aligned & installed into one half of the MultiCyclone pump stand. Close the second half of the MultiCyclone pump stand evenly by gripping the two elongated slots on two sides of the pump stand, and pulling the two MultiCyclone pump stand halves fully together.
- Replace the two quarter turn release keys to ensure both MultiCyclone halves are locked together.



Installation (B), include Multicyclone 12, 12 Plus & 12 Ultra models.

Note: MultiCyclone 12 models **do not** have the additional locking ring for the clear poly carbonate sediment chamber. This will allow the MultiCyclone 12 to be installed into the MultiCyclone pump stand without the pump stand being split.

- Place the MultiCyclone 12 model into the MultiCyclone pump stand top opening, ensuring the twelve retaining screws on the MultiCyclone are correctly align with the MultiCyclone pump stand opening locating slots, and the MultiCyclone clear poly carbonate sediment drain port is properly aligned with one of the MultiCyclone pump stand plumbing exit holes. Refer Image.



The MultiCyclone and pump stand are ready to be connected directly to the outlet port of your Waterco pool pump and the bottom inlet port of the MultiCyclone.

Note: All necessary barrel unions are supplied with a Waterco MultiCyclone (all models) and Waterco pool pump, the only additional requirement will be a suitable length of either 40 or 50mm pipe depending on **site** application.



RECOMMENDATIONS

- The MultiCyclone and MultiCyclone pump stand should be placed on a level concrete slab, very firm ground, or equivalent. Ensure that the ground will not subside, preventing any strain from the attached plumbing.
- Four M8 Nut are available in the bottom legs of the MultiCyclone pump stand that will enable the system to be secured safely to the **ground** using suitable Dyna bolts **or** equivalent devises. This is highly recommended.
- Allow sufficient clearance around the filter to permit visual inspection of the entire system.

Plumbing

- Minimise the length of pipe and the number of fittings to minimise restrictions to water flow.
- Ensure that all plumbing connections are glued and tightened securely to prevent leaking.
- Ensure solvents are not excessively applied to fittings as this could run into "o"-rings and create sealing problems.
- Do not over tighten fittings or adapters.

Screw the supplied half barrel unions and tails onto the inlet and outlet before gluing the UPVC piping onto the filter.

Use only recommended glue for connection pipe and fittings

Cut and fit the pipe and fittings onto the MultiCyclone 12/16, 12/16 Plus, 12/16 Ultra and the pump.

Refer to Pump and MultiCyclone Installation Manual for correct pump plumbing procedures.

It is best practice to fit all the cut pipe and fittings onto the filtration system before gluing; this will ensure that the system has been aligned correctly.

Glue the pipe and fittings onto the pump, filter and pool return lines and allow the glue to set for 24 hours before commissioning the system.

WARRANTY

MultiCyclone pump stand is covered by a year warranty and 1 year warranty on labour. Commercial installations are covered by a 1 year warranty.

Please refer to Waterco's warranty terms and conditions